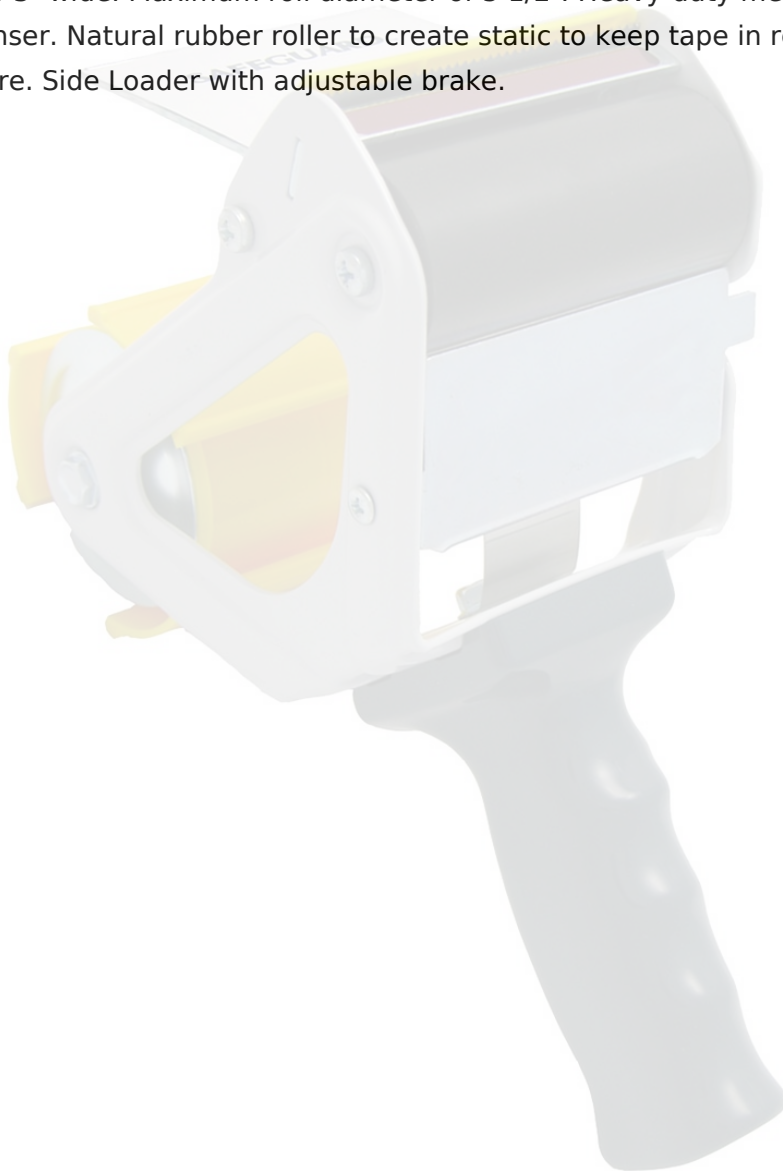




## Product Data Sheet

For tape up to 3" wide. Maximum roll diameter of 5 1/2". Heavy-duty metal frame carton sealing dispenser. Natural rubber roller to create static to keep tape in ready-to-use position. 3" core. Side Loader with adjustable brake.



NOTE: The physical properties listed above are typical test results obtained from a series of laboratory tests and should not be used for the purpose of writing specifications. Before using this product, user shall determine the suitability of the product for his/her use; and user assumes all risks and liabilities in connection therewith. All test procedures used are in accordance with ASTM and PSTC methods.

**[tapedepot.com](http://tapedepot.com) | [support@tapedepot.com](mailto:support@tapedepot.com) | 888.282.8273**

2024-04-25 10:06:13 172.31.87.187